

C&I All-in-One ESS

(50kW / 100kWh)



Model

Vault 100



Integrated All-in-One System

50 kW / 100 kWh Rated Capacity
Single Cabinet Design



UPS-Grade Power Continuity

<10ms Transfer Time
UPS Tier-3 standards



Ultra-Compact Footprint

≤2 m² Installation Area
25 kW/m² Power Density



Flexible Scalability

Up to 10 Units Parallel
500 kW / 960 kWh System



High System Efficiency

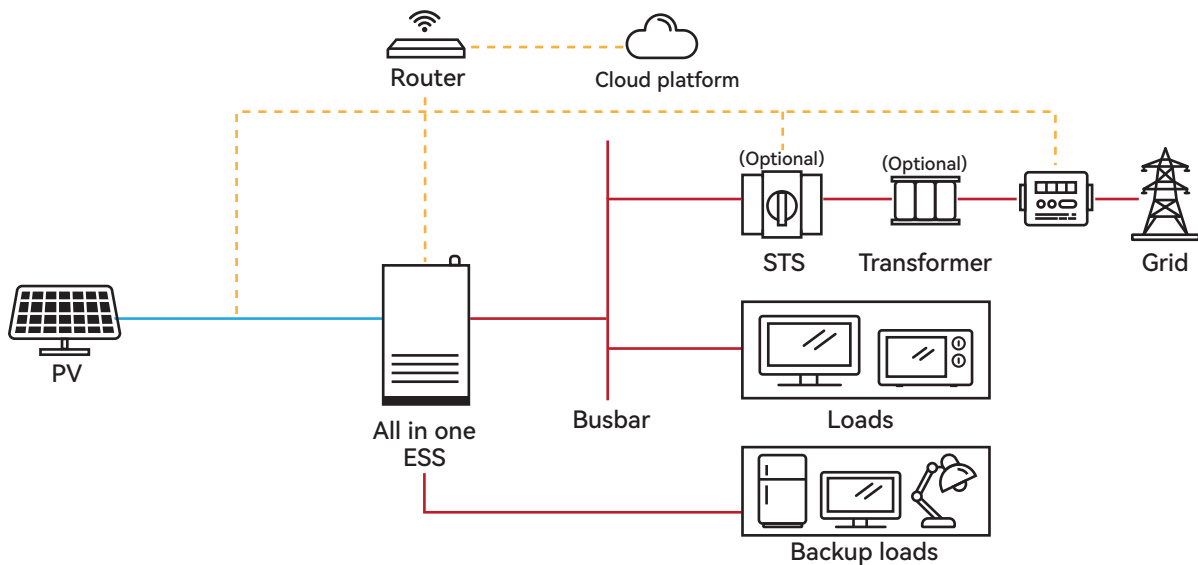
98.2% Peak Efficiency
97.1% European Efficiency



High-Safety LFP Battery

Single-String Architecture
Precision HVAC Cooling

System Connection Illustration (For Reference)



Model	Vault 100
DC Side	
Max. DC Input Voltage	1000 V
MPPT Voltage Range	180 – 900 V
Number of MPPTs	4
Max. Input Current (per MPPT)	36 A
AC Output (On-Grid)	
Rated AC Power	50 kW
Max. Apparent Power	55 kVA
Rated Grid Voltage	3L / N / PE, 380 / 400 V
Rated Grid Frequency	50 / 60 Hz
Rated Output Current	79 A
Power Factor	>0.99 (adjustable 0.8 leading ... 0.8 lagging)
Total Harmonic Distortion (THDi)	<3%
AC Output (On-Grid)	
Max. Bypass Current	87 A
Rated Input Voltage	3L / N / PE, 380 / 400 V
Rated Frequency	50 / 60 Hz
Generator Input	
Max. Input Power	50 kW
Rated Input Current	79 A
Rated Voltage	3L / N / PE, 380 / 400 V
Rated Frequency	50 / 60 Hz
EPS Output (Off-Grid)	
Rated Output Power	50 kW
Max. Apparent Power / Peak	75 kW / 10 s
Grid / Off-Grid Transfer Time	<10 ms
Rated Voltage	3L / N / PE, 380 / 400 V
Rated Frequency	50 / 60 Hz
Rated Output Current	79 A
System	
Max. System / PCS Efficiency	98.20%
European Efficiency	97.10%
Battery	
Cell Type	LFP, 3.2 V 314 Ah
Battery Configuration	96S1P
Rated Battery Voltage	307.2 V
Rated Energy	96.6 kWh (314 Ah @ 307.2 V)
Operating Voltage Range	249.6 – 350.4 V
Charge / Discharge Rate	0.5 C
System	
Protection Rating	IP55
Dimensions (W × D × H)	1125 × 1270 × 2080 mm (±10 mm)
Weight	1200 ± 20 kg
Communication	RS485, WiFi / BLE
Cooling Method	Air-conditioned cooling
Operating Temperature	-20 to 50 °C (derating >45 °C)
Relative Humidity	0 – 95% (non-condensing)
Max. Altitude	<4000 m
Expansion	Off-grid: Up to 10 units On-grid: greater capacity achievable
Certifications	
Safety / EMC	IEC 62619 / IEC 63056 / CE-EMC / CE-LVD / UN38.3 / IP tests
Grid Codes	CEI 0-21 / NRS097-2-1:2017 / VDE-AR-N 4105:2018 / COC 3310-2014

All specifications are for reference only. Dimensions and weight are approximate and subject to change as product design is finalized.